

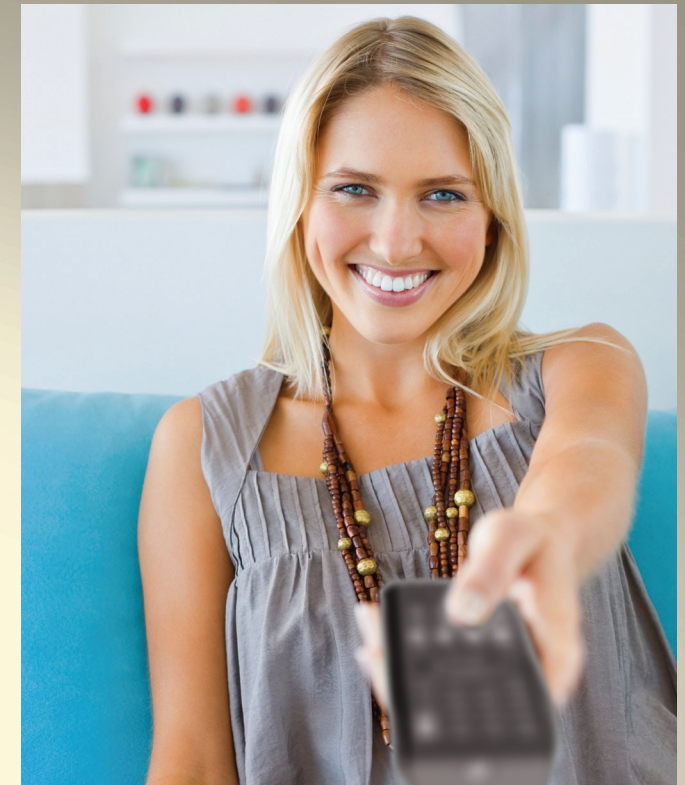


Ambitious flagship model

HDI Dune is proud to present the top of the line Dune HD Max universal digital media player. This flagship product is built in HDI Dune's production facilities in Taiwan, a country well known for its "Japanese" approach to the manufacturing of electronics. Additionally the Dune HD Max now comes with a two-year warranty.

In terms of functionality, the new Dune HD Max combines and expands characteristics of the popular Dune BD Prime 3.0 and Dune HD Base 3.0 media players. Featuring the powerful Sigma Designs SMP8642 video processor and a built-in silent optical drive, the Dune HD Max is capable of playing back anything from CD to DVD to Blu-ray discs to network based files or Internet delivered streams. The Dune HD Max also includes a 3.5" SATA HDD rack with hot-swap support, an SD card slot, and 3 high speed USB 2.0 ports to connect external storage and expansion modules or devices.

The Dune HD Max supports nearly all audio and video formats regardless of resolution or type. For example, the player fully supports Dolby TrueHD, DTS HD Master Audio and plays all DVD, Blu-ray discs and images.



THX Media Director is a unique technology that transforms movies, music and other digital media into smart content that enables A/V components to auto-select the most appropriate audio and video playback settings, preserving the content creator's artistic intent. Working behind the scenes, the technology is seamless to consumers.

- **Content creation:** From capture to post-production, metadata describes specific creative and technical characteristics of audio and video content
- **Distribution:** Metadata is associated with each program and distributed with content
- **Playback:** CE devices recognize content characteristics, enabling them to auto-select the most appropriate AV settings for optimum home entertainment experience



Dune HD Smart B1

The Dune HD Smart B1 media player is compact, features a built-in low-noise optical disc drive (CD/DVD/Blu-ray) based on Sony mechanics and optics, specially designed for usage in home cinema systems. This allows the owner of Smart B1 to play back all commercial discs from CDDA to DVD and Blu-ray discs. Besides, it is equipped with three high-speed USB 2.0 ports and an SD memory card slot. Video outputs of the model are represented by HDMI v1.3, composite and component analog outputs. Sound can be output via HDMI, Toslink optical interface, and RCA stereo.

Dune HD Smart players allow to create custom configurations based on the primary (head) unit like Dune HD Smart B1/H1/D1 and several optional extension modules of choice, which can be combined to form an integrated player.

Besides, grouping the required number of modules allows to supersede the functionality of Dune HD Max, providing more flexibility at the same time. In particular, the modular approach provides the possibility to group modules in any order at any time depending on user's demands, as well as replacing (upgrading) particular modules instead of replacing the entire set of equipment.



THX Media Director is a unique technology that transforms movies, music and other digital media into smart content that enables A/V components to auto-select the most appropriate audio and video playback settings, preserving the content creator's artistic intent. Working behind the scenes, the technology is seamless to consumers.

- **Content creation:** From capture to post-production, metadata describes specific creative and technical characteristics of audio and video content
- **Distribution:** Metadata is associated with each program and distributed with content
- **Playback:** CE devices recognize content characteristics, enabling them to auto-select the most appropriate AV settings for optimum home entertainment experience

